

My Childhood



Early Childhood Development in Lebanon



WORLD BANK GROUP



B9.2 HUMAN DEVELOPMENT INDEX

Lebanon is an upper-middle-income country with a gross domestic product per capita in 2012 of about \$9,705 (in current US Dollars, table B9.2.1). Lebanon has an estimated population of 4.4 million, of which 22 percent are under the age of 15. The average life expectancy at birth in 2012 was 80 years, which was a substantial improvement over 1990s life expectancy of 70 years. The primary gross enrollment rate in Lebanon was 107 percent in 2012. Overall, Lebanon ranks 72 out of 186 countries with comparable data in the 2012 Human Development Index.

	2010	2012
Population (million)	27	4.4
% of population under 15	34	22
GDP per capita (US Dollars)	\$1,050	\$9,705
Life expectancy at birth (years)	70	80
School enrollment, primary (% gross)	—	107

Source: UNDP 2014; World Development Indicators.
 GDP = gross domestic product; — = not available.

Lebanon is an upper-middle-income country with a gross domestic product per capita in 2012 of about \$9,705 (in current US Dollars, table B9.2.1). Lebanon has an estimated population of 4.4 million, of which 22 percent are under the age of 15. The average life expectancy at birth in 2012 was 80 years, which was a substantial improvement over 1990s life expectancy of 70 years. The primary gross enrollment rate in Lebanon was 107 percent in 2012. Overall, Lebanon ranks 72 out of 186 countries with comparable data in the 2012 Human Development Index.

Lebanon is an upper-middle-income country with a gross domestic product per capita in 2012 of about \$9,705 (in current US Dollars, table B9.2.1). Lebanon has an estimated population of 4.4 million, of which 22 percent are under the age of 15. The average life expectancy at birth in 2012 was 80 years, which was a substantial improvement over 1990s life expectancy of 70 years. The primary gross enrollment rate in Lebanon was 107 percent in 2012. Overall, Lebanon ranks 72 out of 186 countries with comparable data in the 2012 Human Development Index.

Lebanon is an upper-middle-income country with a gross domestic product per capita in 2012 of about \$9,705 (in current US Dollars, table B9.2.1). Lebanon has an estimated population of 4.4 million, of which 22 percent are under the age of 15. The average life expectancy at birth in 2012 was 80 years, which was a substantial improvement over 1990s life expectancy of 70 years. The primary gross enrollment rate in Lebanon was 107 percent in 2012. Overall, Lebanon ranks 72 out of 186 countries with comparable data in the 2012 Human Development Index.

Lebanon is an upper-middle-income country with a gross domestic product per capita in 2012 of about \$9,705 (in current US Dollars, table B9.2.1). Lebanon has an estimated population of 4.4 million, of which 22 percent are under the age of 15. The average life expectancy at birth in 2012 was 80 years, which was a substantial improvement over 1990s life expectancy of 70 years. The primary gross enrollment rate in Lebanon was 107 percent in 2012. Overall, Lebanon ranks 72 out of 186 countries with comparable data in the 2012 Human Development Index.

Lebanon is an upper-middle-income country with a gross domestic product per capita in 2012 of about \$9,705 (in current US Dollars, table B9.2.1). Lebanon has an estimated population of 4.4 million, of which 22 percent are under the age of 15. The average life expectancy at birth in 2012 was 80 years, which was a substantial improvement over 1990s life expectancy of 70 years. The primary gross enrollment rate in Lebanon was 107 percent in 2012. Overall, Lebanon ranks 72 out of 186 countries with comparable data in the 2012 Human Development Index.

Lebanon is an upper-middle-income country with a gross domestic product per capita in 2012 of about \$9,705 (in current US Dollars, table B9.2.1). Lebanon has an estimated population of 4.4 million, of which 22 percent are under the age of 15. The average life expectancy at birth in 2012 was 80 years, which was a substantial improvement over 1990s life expectancy of 70 years. The primary gross enrollment rate in Lebanon was 107 percent in 2012. Overall, Lebanon ranks 72 out of 186 countries with comparable data in the 2012 Human Development Index.

Lebanon is an upper-middle-income country with a gross domestic product per capita in 2012 of about \$9,705 (in current US Dollars, table B9.2.1). Lebanon has an estimated population of 4.4 million, of which 22 percent are under the age of 15. The average life expectancy at birth in 2012 was 80 years, which was a substantial improvement over 1990s life expectancy of 70 years. The primary gross enrollment rate in Lebanon was 107 percent in 2012. Overall, Lebanon ranks 72 out of 186 countries with comparable data in the 2012 Human Development Index.

Lebanon is an upper-middle-income country with a gross domestic product per capita in 2012 of about \$9,705 (in current US Dollars, table B9.2.1). Lebanon has an estimated population of 4.4 million, of which 22 percent are under the age of 15. The average life expectancy at birth in 2012 was 80 years, which was a substantial improvement over 1990s life expectancy of 70 years. The primary gross enrollment rate in Lebanon was 107 percent in 2012. Overall, Lebanon ranks 72 out of 186 countries with comparable data in the 2012 Human Development Index.

a d a s s a a a a a a d a s a
 a . - a a a a a a d s
 a , a s a a a a a . I
 - a , 4 p s d L a a d
 (2 a d d a [SD]). I - , 6 p s
 d a a d (2 SD).
 N , - p s d d a
 s , d d a (W d D p I d s a) . s M s a
 , a A, s a d d p a a p a a a d s -
 d p . R a a a 8 p s d s a a
 a a d s d p d a s d
 d .

Cognitive, Social, and Emotional Development

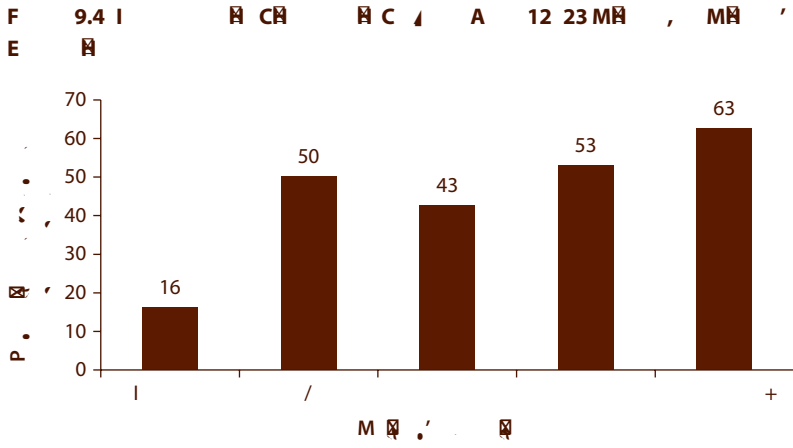
2004 PAPFAM d s s d a a a , d d s a ,
 s d s a a L a a a 81 p s a p -
 p a , (W d D p I d s a) . I L a , a , d s a a d
 d s a (ECCE) p d d , a p s a d p a a d

d s (a / a). U d a d a a s a d a
d a ECD a d a
a a s .

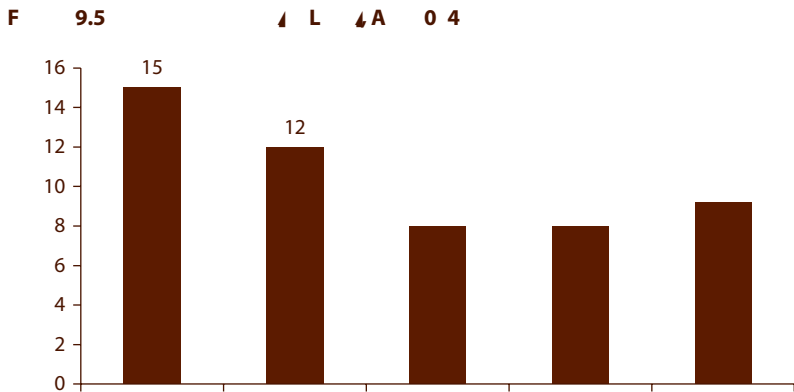
Survival, Health Care, and Nutrition

G a a a a a a
d L a , a d a a a . H , d a a a a
a a a a (95%), a a a d a a
a a d a a a a a a . H d a a d ' ,
a d ' d a a a a a d a a a a .
B a a a a 89% a a a a
a , a a a a 100% a a .
a a d a d ' d a (9.3). a

... a a d a a d p a ' d sa . F a s , a
 33 p s d 12 23 d p a a a a a a a a a a
 d 78 p s d D a a a a a d d sa-
 , a 9.4 d a a s a , a a a a
 16 p s d a d d sa d
 . A a s a a s , d a d a d
 d a sa 10 d a
 a d p a , d sa . a sa d s
 I a a d s a a s d
 a a s . F a a d a d a a s d
 H , (15 p s) a d s d p
 a d (12 p s) a d , a d
 a (8.9 p s) (9.5). A a a a



... World Bank calculations based on Lebanon PAPFAM 2004.



... World Bank calculations based on Lebanon PAPFAM 2004.

a d a s , a s a sa
 a a a d a a a a .
 I a a d a s a a a ,
 Wa a d d sa a a s a d ' a
 a s . Ta 9.2 a d s s a s
 a , d s a s a 100 s . Wa
 a , a a s a , a a a d , a d -
 s a , a d . M ' d sa a s a , a a -
 a sa . Fa ' d sa a a s a , a a
 H a d d sa s a a , . A d
 d s a .
 d d s , a d a a d d a d a a d a s a a ,
 d ECD a d sa a s d a s a d a
 a a s . Ea , a d s s a d a , a
 a d a s a . I a d
 20 s a d a d s a d a (a a a d a a d d)
 a d s a a d a a a a d sa a d
 a a 20 s a d (a a d a a d d),
 a a d a s a s , ECD. F 9.6 s

A	9B:1	B	C
9B.1 I	B	C	
<i>Gender</i>			
-		10.7	0.14
F		10.6	0.13
<i>Wealth quintile</i>			
82.0	0.06	89.2	15.0
		95.3	-0.34
		95.9	0.06
		97.8	0.30
F		98.9	0.43
		100.0	0.38
<i>Woman's education</i>			
-		80.1	5.1
Read/write		90.6	19.0
--		95.5	18.7
		97.8	22.7
+		99.3	34.5
<i>Partner's education</i>			
-		82.3	5.4
Read and/or write		93.2	26.0
--		94	5.4
Read		20	0.06

A 9C: A M C ECDI B ,
 A M C
 9C.1 ECDI M B
 C

Wealth—20% of households—compared to poorest

-	+		+
F	+	+	+
Highest	+	+	+

Woman's education—compared to no education

Read/write			n.a.	n.a.
--	+		n.a.	n.a.
	+		n.a.	n.a.
+	+		n.a.	n.a.
			Read/write	

Read/write

5. DPT (), a d a .
6. d d a a .
7. A a a d d , a a d .
8. M a 15 d a .
9. W a .